

Lot No	Sire Name	Group	Tajima	Kedaka	Tottori	Itozakura	Shimane	Okayama	Hiroshima	Other	Total
1	ECHIGO B1001	C	4	8	3	1	-	-	-	-	16
			25%	50%	19%	6%	0%	0%	0%	0%	



DOB	Weight @ 15/02/08	ADG	Scrotal size	Frame Score	Vendor Comment
18/11/06	371	0.76	30	3	Bred by Japanese Wagyu specialist "Echigo Farm" for growth and marbling

Price
\$2,500

Pedigree

Echigo B1001	Pedigree		Comment:
	ITOMORITAKA J2703	ITOKITAZURU	
	Itohirashige	Itokitazuru	Maximised Kedaka/ Tottori content (69%) with Tajima Kikuteru influence for well balanced growth and marbling. Dam "V13" brothers achieved 50% A4/5 in Japan. Strong for F1 over Brahman and Holstein or add frame and growth with marbling in F2>F6 Angus.. In fullblood production use over large (Group C) females for good marbling and growth.
	Dai 6 Oefuji	Hirashigekiyoshi	
		Dai 5 Kedakafuji	
		Ooe	
	Terunaga Doi	KITATERUYASUDO I J2810	
	Yoshimi		
	V13 Ayaka	Kedakafuji	
		W57 Yamaketakafuji	
		Kikushige	

Lot No	Sire Name	Group	Tajima	Kedaka	Tottori	Itozakura	Shimane	Okayama	Hiroshima	Other	Total
2	ECHIGO B1003	C	2	6	4	2	-	2	-	-	16
			13%	38%	25%	13%	0%	13%	0%	0%	



DOB	Weight @ 15/02/08	ADG	Scrotal size	Frame Score	Vendor Comment
11/11/06	371	0.75	31	4	Bred by Japanese Wagyu specialist "Echigo Farm" for high Growth and feed efficiency

Price
\$2,500

Pedigree

Echigo B1003	Pedigree		Comment:
	ITOMORITAKA J2703	ITOKITAZURU	
	Itohirashige	Itokitazuru	High Kedaka/ Tottori content (60%) for superior growth with marbling. Itozakura and Okayama line to support feed efficiency and frame size. Use for fullblood production over high Tajima (Group B/D) females or high Tajima influence crossbred females to improve growth while maintaining marbling or add frame and growth with marbling in F2>F6 Angus.
	Dai 6 Oefuji	Hirashigekiyoshi	
		Dai 5 Kedakafuji	
		Ooe	
	Dai 20 Hirashige	HIRASHIGETAYASU J2351	
	Yurihime		
	V56 Chinatsu	ITOKITADOI J2359	
		Y42 Chiyohime Doi	
		Chiyohime	

Lot No	Sire Name	Group	Tajima	Kedaka	Tottori	Itozakura	Shimane	Okayama	Hiroshima	Other	Total
3	ECHIGO B1005	C	2	6	4	2	-	2	-	-	16
			13%	38%	25%	13%	0%	13%	0%	0%	



DOB	Weight @ 15/02/08	ADG	Scrotal size	Frame Score	Vendor Comment
9/11/06	330	0.66	31	3	Bred by Japanese Wagyu specialist "Echigo Farm" for high Growth

Price
\$2,500

Pedigree

Echigo B1005	Pedigree		Comment:
	ITOMORITAKA J2703	ITOKITAZURU	
	Itohirashige	Itokitazuru	High Kedaka/ Tottori content (60%) for superior growth with marbling. Itozakura and Okayama line to support feed efficiency and frame size. Use for fullblood production over high Tajima (Group B/D) females or high Tajima influence crossbred females to improve growth while maintaining marbling or add frame and growth with marbling in F2>F6 Angus.
	Dai 6 Oefuji	Hirashigekiyoshi	
		Dai 5 Kedakafuji	
		Ooe	
	Dai 20 Hirashige	HIRASHIGETAYASU J2351	
	Yurihime		
	V56 Chinatsu	ITOKITADOI J2359	
		Y42 Chiyohime Doi	
		Chiyohime	

Lot No	Sire Name	Group	Tajima	Kedaka	Tottori	Itzakura	Shimane	Okayama	Hiroshima	Other	Total
4	ECHIGO B1007	D	7	4	1	1	-	2	-	1	16

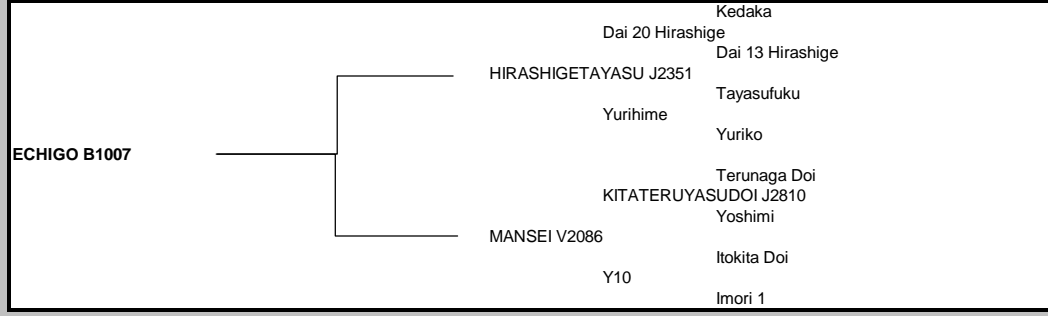
44%	25%	6%	6%	0%	13%	0%	6%
-----	-----	----	----	----	-----	----	----



DOB	Weight @ 15/02/08	ADG	Scrotal size	Frame Score	Vendor Comment
22/11/06	330	0.68	30	3	Bred by Japanese Wagyu specialist "Echigo Farm" with high Marbling

Price
\$2,500

Pedigree



Comment:

A strong balance of Nakadoi and Kedaka lines. Proven growth with high marbling - dam "V2086" brothers recorded 85% A4-5 in Japan. Use for fullblood production over large (Group C) females for marbling with good growth, or in F1 joinings over Brahman, Holstein and Angus or add frame and growth with marbling in F2>F6 Angus.

Lot No	Sire Name	Group	Tajima	Kedaka	Tottori	Itzakura	Shimane	Okayama	Hiroshima	Other	Total
5	ECHIGO B3001	B/D	6	5	2	2	-	1	-	-	16

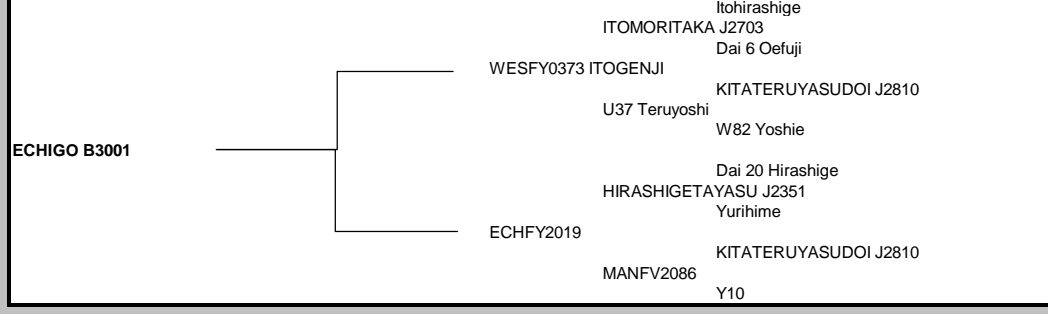
38%	32%	12%	12%	0%	6%	0%	0%
-----	-----	-----	-----	----	----	----	----



DOB	Weight @ 15/02/08	ADG	Scrotal size	Frame Score	Vendor Comment
21/4/06	470	0.67	33	3	Bred by Japanese Wagyu specialist "Echigo Farm" with high Marbling

Price
\$3,750

Pedigree



Comment:

Well balanced Nakadoi and Kedaka lines. Tajima line breeding with Kiteruyasudoi targets high marbling, balanced by strong Kedaka growth. Grand Dam Y10 has recorded exceptional 85% A4-5 progeny carcass results in Japan. Use for fullblood production over large (Group C) females to set marbling with good growth or in F1 joinings over Brahman, Holstein.

Lot No	Sire Name	Group	Tajima	Kedaka	Tottori	Itzakura	Shimane	Okayama	Hiroshima	Other	Total
6	Dai 2 MAIFUKU	D	8	4	1	1	-	0	1	1	16

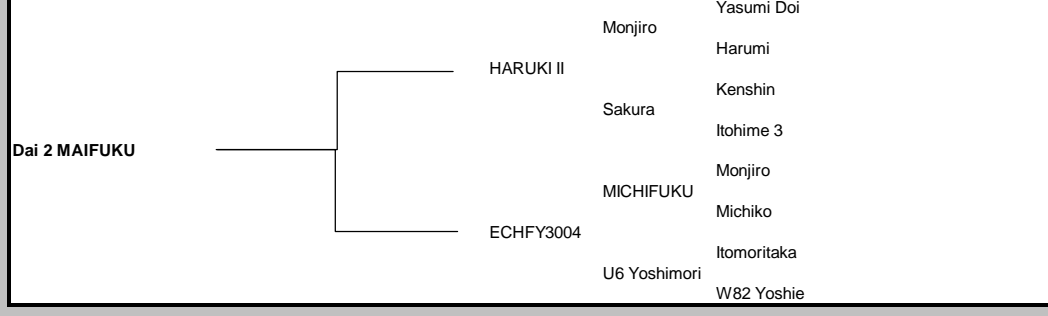
50%	25%	6%	6%	0%	0%	6%	6%
-----	-----	----	----	----	----	----	----



DOB	Weight @ 15/02/08	ADG	Scrotal size	Frame Score	Vendor Comment
18/9/06	430	0.79	32	4	Bred by Japanese Wagyu specialist "Echigo Farm" for high Marbling

Price
\$8,000

Pedigree



Comment:

A strong influence of Yasumi Doi, and Kedaka lines for good growth with high marbling. Two generations of proven Monjiro from Yasumi Doi, set marbling ability while Kedaka influence maintains growth. Brothers of dam Y3004 have recorded outstanding 75% A4-5 carcass results in Japan. Use in fullblood production over large (Group C) females or in F1 joinings over Brahman, Holstein and Angus or add frame and growth with marbling in F2>F6 Angus.

Lot No	Sire Name	Group	Tajima	Kedaka	Tottori	Itozakura	Shimane	Okayama	Hiroshima	Other	Total
7	ECHIGO B3004	B	11	4	1	-	-	0	-	-	16

69% 25% 6% 0% 0% 0% 0% 0%



DOB	Weight @ 15/02/08	ADG	Scrotal size	Frame Score	Vendor Comment
18/9/06	340	0.61	30	3	Bred by Japanese Wagyu specialist "Echigo Farm" for high Marbling

Price
\$2,500

Pedigree

Comment:

ECHIGO B3004		Kikuteru Doi	<p>Combines superior marbling from two generations of Kitateruyasu Doi with strong Kedaka growth from Hirashigetayasu. Good growth, high marbling. Use in fullblood production over large (Group C) females or in F1 programs over Brahman , Holstein and Angus.</p>
		Terunaga Doi	
		Terunaho	
		Yasutani Doi	
		Yoshimi	
		Yoshimi	
		Dai 20 Hirashige	
		HIRASHIGETAYASU J2351	
		Yurihime	
		KITATERUYASUDO J2810	
		V13 Ayaka	
		W57 Yamaketakafuji	

Lot No	Sire Name	Group	Tajima	Kedaka	Tottori	Itozakura	Shimane	Okayama	Hiroshima	Other	Total
8	ECHIGO B3006	B	5.5	5.63	2.38	0.5	-	1.75	-	0.25	16

37% 37% 12.50% 6% 0% 12% 0% 0%



DOB	Weight @ 15/02/08	ADG	Scrotal size	Frame Score	Vendor Comment
10/10/06	290	0.56	28.5	2	Bred by Japanese Wagyu specialist "Echigo Farm" for high marbling and growth

Price
\$2,500

Pedigree

Comment:

ECHIGO B3006		Itohirashige	<p>Well balanced Kitateruyasu Doi (Kikuteru Doi line) and Hirashigetayasu (Kedaka X Tayasu Doi) to achieve high marbling with strong growth. Kitateruyasu Doi and Hirashigetayasu are combined through three generations to stabilize key traits. Use for fullblood production over large (Group C) females or F1 programs over Brahman , Holstein.</p>
		ITOMORITAKA J2703	
		Dai 6 Oefuji	
		WESFZ0199 HARUKOHOYOH	
		X166 Kokubo	
		H8 Tayasufuji 98/1	
		Dai 20 Hirashige	
		HIRASHIGETAYASU J2351	
		Yurihime	
		KITATERUYASUDO J2810	
		V13 Ayaka	
		W57 Yamaketakafuji	

Lot No	Sire Name	Group	Tajima	Kedaka	Tottori	Itozakura	Shimane	Okayama	Hiroshima	Other	Total
9	YAMBOON B0003	B	12	-	-	3	-	1	-	-	16

74% 0% 0% 19% 0% 6% 0% 0%



DOB	Weight @ 15/02/08	ADG	Scrotal size	Frame Score	Vendor Comment
15/11/06	282	0.57	26	3	True Tajima characteristics by "ECHIGO Farm Z3004"

Price
\$2,500

Pedigree

Comment:

YAMBOON B0003		Shigeshigenami	<p>High Nakadoi contents with Shigekanenami - Kikuteru-Doi - Dai 2 Yasutsuru Doi combination. Strong marbling ability with plenty of frame size. This bull can be used for fullblood production over large (Group A, C) females to set marbling with good growth or F1 over Brahman , Holstein and Angus.</p>
		ITOSHIGENAMI TF148	
		Fukuyuki	
		ECHIGO Z3004	
		X151 Asaaka	
		U38 Moritake	
		Dai 2 Yasutsuru Doi	
		FUKUTSURU J068	
		Teruyasu	
		Gooree Chisfuku U036	
		Yasukane	
		Chisahime	
		Yoshihime 3	